

Widget Mistakes

V1.0
3/00 Copyright 2000 by Jonathan Amsterdam. All Rights Reserved. May not be reproduced in whole or in part without prior written permission.

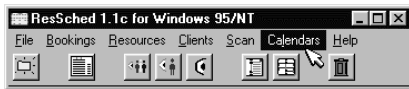
1

Sources

- IArchitects' *Interface Hall of Shame*
 - www.iarchitect.com/mshame.htm
- Personal experience

2

Menu Miscues



Menu brings up a dialog

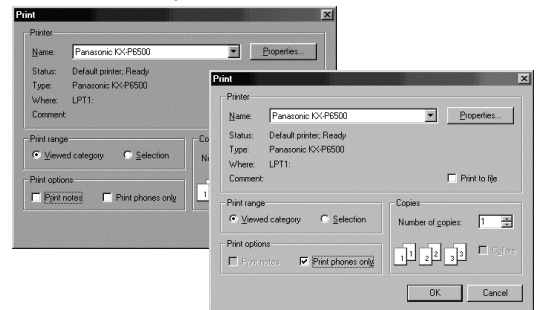


"Menus" activate commands

3

Palm Desktop Print Options

- Note Print options



4

Palm Desktop Print Options

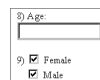
- A better design: vertical checkboxes:
 - Print phone numbers
 - Print addresses
 - Print notes

5

Radio Buttons vs. Checkboxes



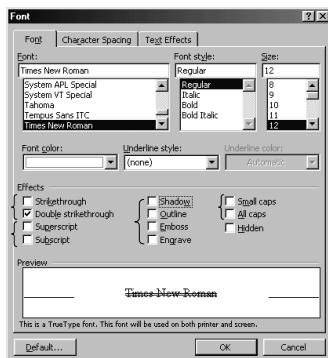
Use checkboxes (or just refresh both without asking)



Hermaphrodites welcome

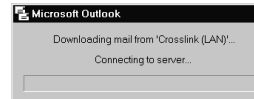
6

MS Word 2000

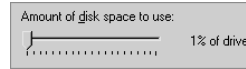


Braces show mutually exclusive choices

7



Always shows 0% or 100%



For IE cache.
Basically a good design,
but note:
1% of 10 Gig = 100 Meg!

8

Click and Print



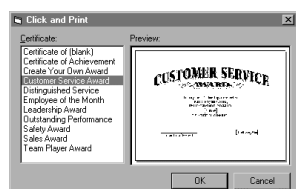
9

Problems with Previous Dialog

- Instructions in title bar
- Right justified text
- Cancel before OK
- Reference to "OKAY" button
- Ugly green color
- Only way to see or select styles is to use the scrollbar to go through linearly

10

IArchitects' Improvement



11

More from Click and Print

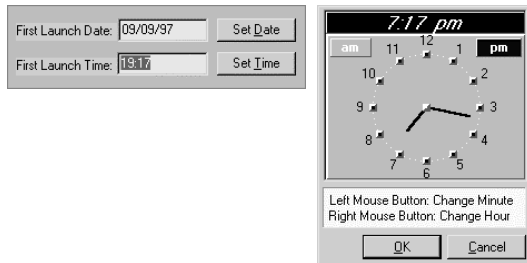


- Clicking on first three checkboxes brings up a dialog
- Box is checked when user chooses OK in dialog
- Clicking Print prints the certificate

12

Automate Pro

- You can select text, but you can't type it
- You must bring up the clock dialog



13

Scrolling Abuse

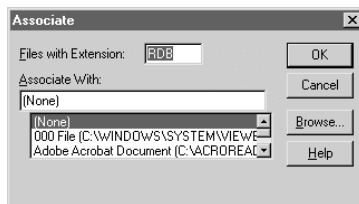


Horizontal scrolling is generally bad



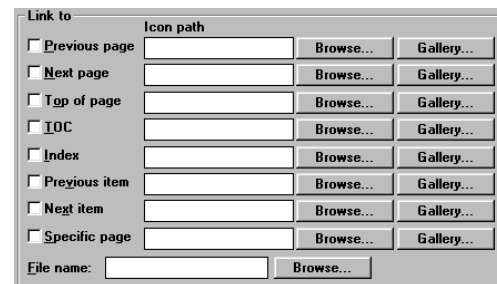
Scrolling a GUI screen is always bad

14



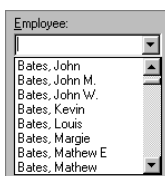
Only three items displayed (list box contains 133).

15



Too many buttons.
Alternative??

16



Thousands of entries in a list.
How do you provide a choice from thousands of names?



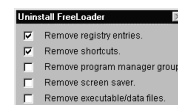
"Don't let the user make a mistake" taken to extremes.
(How about a GOMS KLM analysis of this?)

17



Too many radio buttons cause visual clutter, even if space is available.

A list with, say, 10 visible entries would be fine.



These check boxes accept input, but are used as output widgets to show progress.

18

