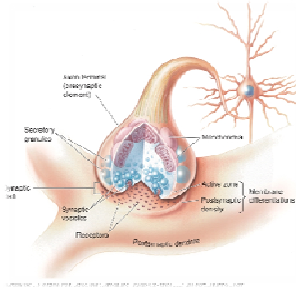


Anatomy and Physiology

Synapses

Synapses

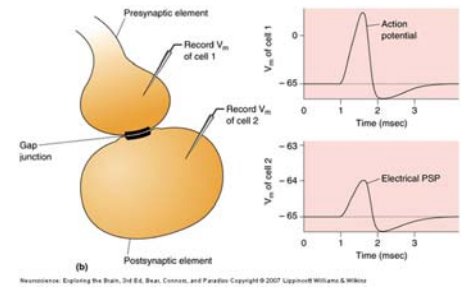
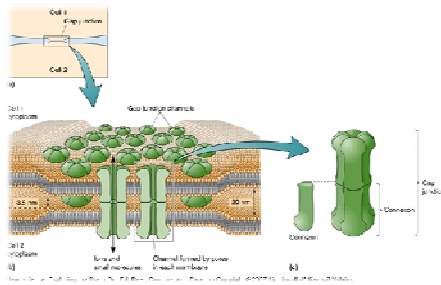


- Types
- Electrical
 - Chemical

Electrical Synapses

- Demo

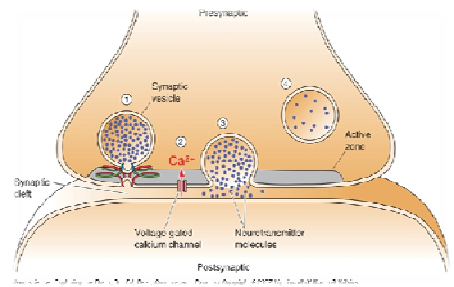
Gap Junctions



Chemical Synapses

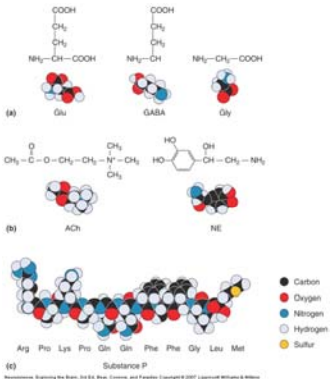
- Demo

Chemical Synapse

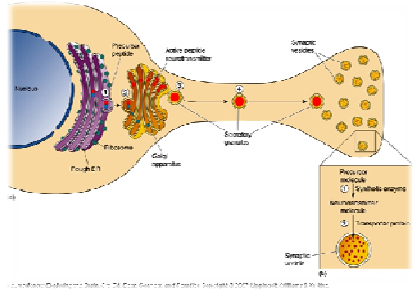


The Major Neurotransmitters

- (a) Amino Acids
- glutamate
 - gamma-aminobutyric acid
 - Glycine
- (b) Amines
- Acetylcholine
 - Norepinephrine
 - Epinephrine
 - Dopamine
 - Histamine
 - Serotonin
- (c) Peptides
- Substance P
 - Neuropeptide Y
 - Enkephalins
 - Dynorphin
 - Corticotrophin Releasing Hormone
 - Cholecystokinin
 - And many more.....

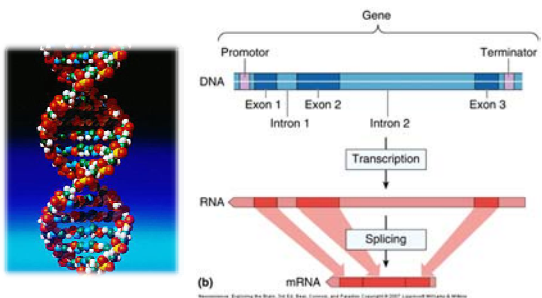


Neuroscience: Exploring the Brain, 3rd Ed., Bear, Connors, and Paradiso Copyright © 2007 Lippincott Williams & Wilkins



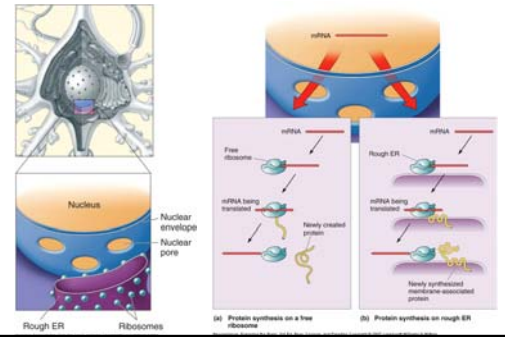
Neuroscience: Exploring the Brain, 3rd Ed., Bear, Connors, and Paradiso Copyright © 2007 Lippincott Williams & Wilkins

DNA and Genes

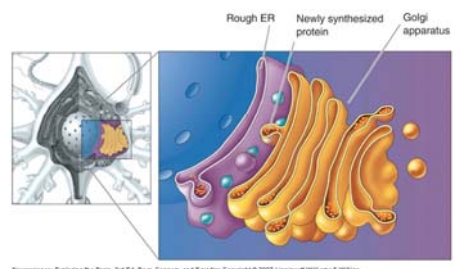


Neuroscience: Exploring the Brain, 3rd Ed., Bear, Connors, and Paradiso Copyright © 2007 Lippincott Williams & Wilkins

Protein synthesis



Neuroscience: Exploring the Brain, 3rd Ed., Bear, Connors, and Paradiso Copyright © 2007 Lippincott Williams & Wilkins



Neuroscience: Exploring the Brain, 3rd Ed., Bear, Connors, and Paradiso Copyright © 2007 Lippincott Williams & Wilkins

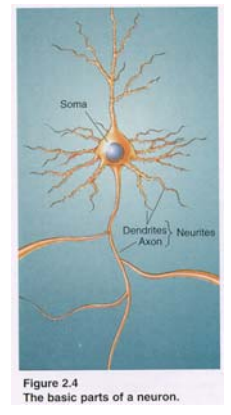
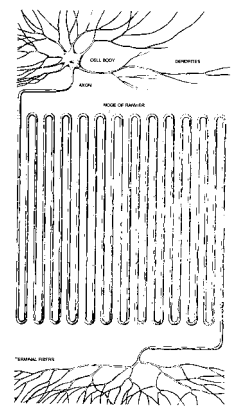
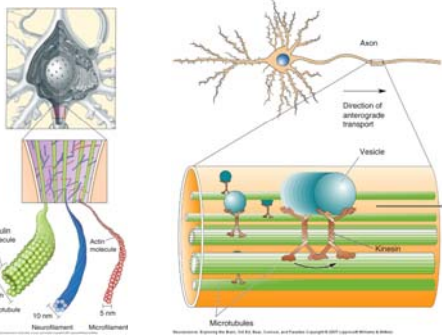
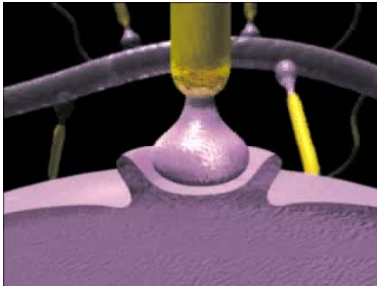
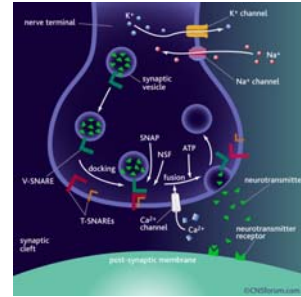


Figure 2.4 The basic parts of a neuron.

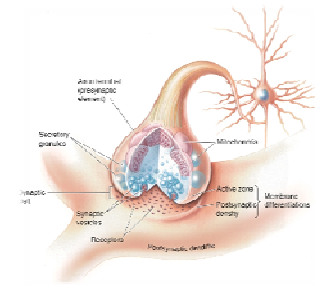
Axonal Transport



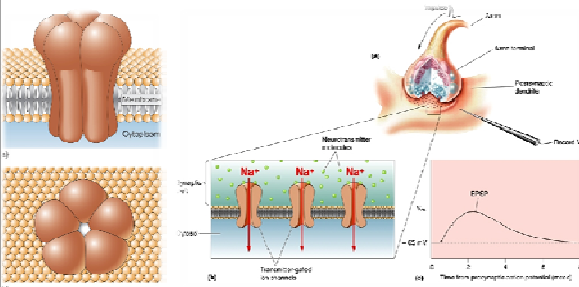
Presynaptic transmitter release



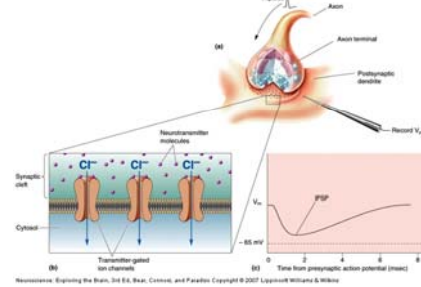
Post synaptic responses

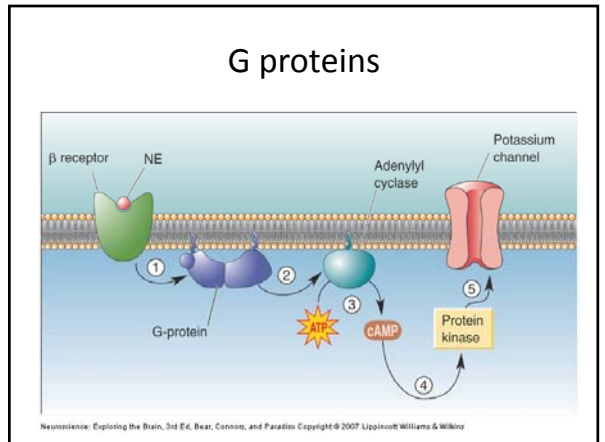
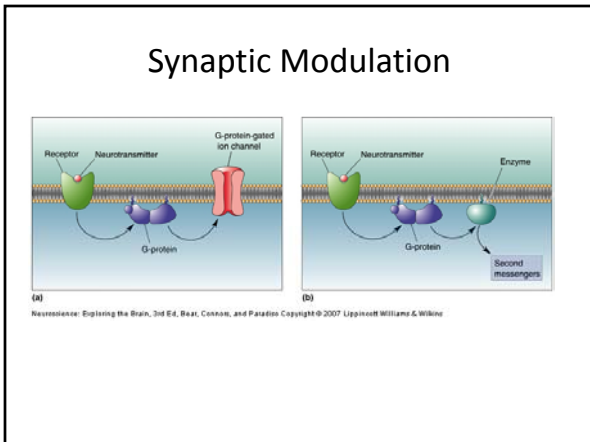
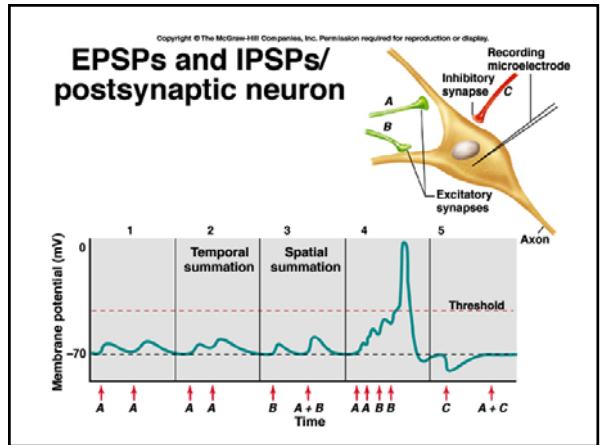
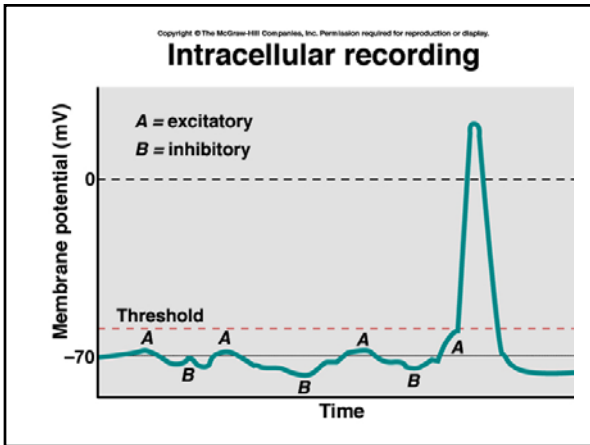
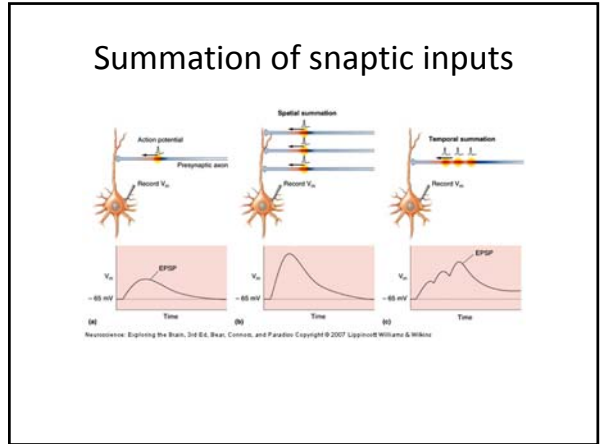
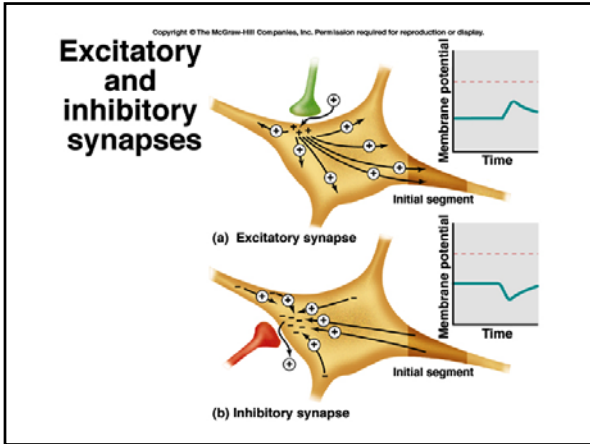


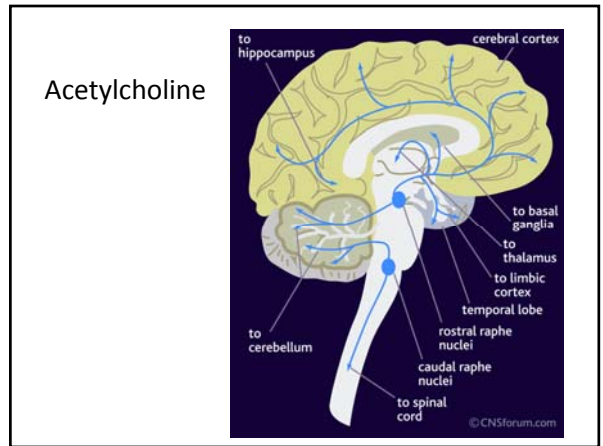
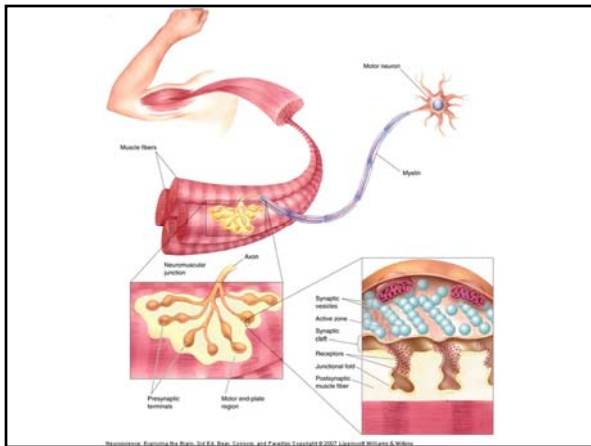
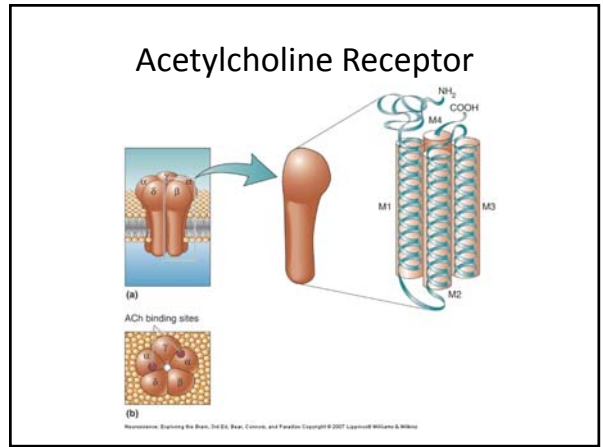
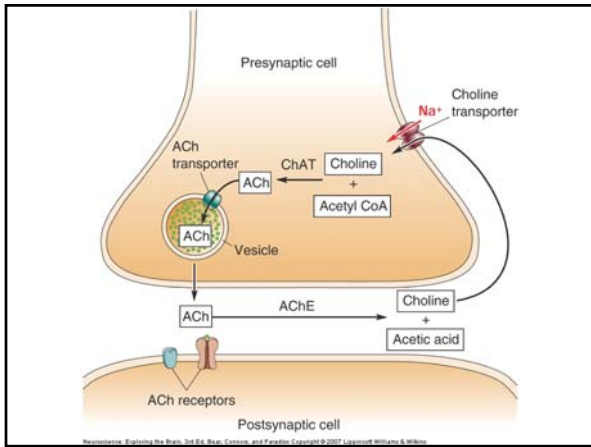
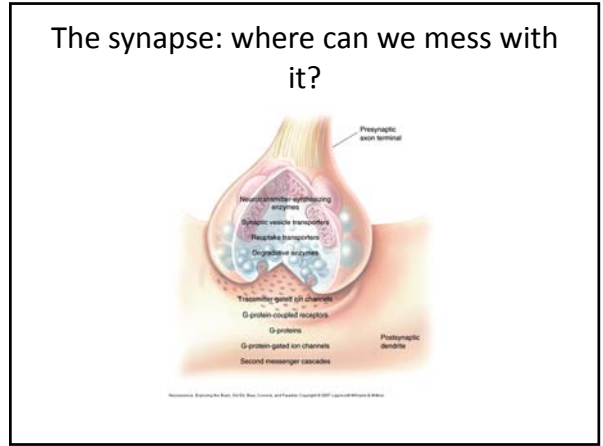
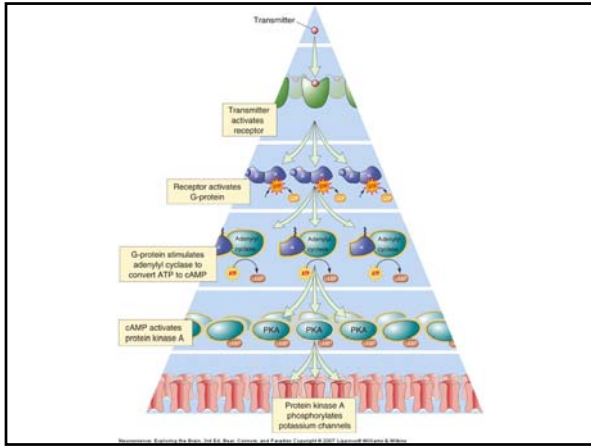
Excitatory Post synaptic responses (EPSP)

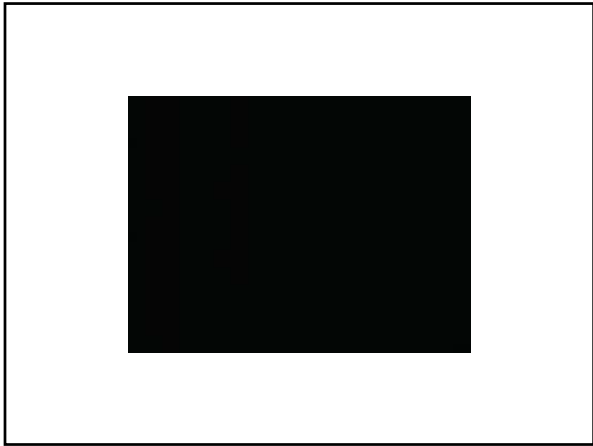


Inhibitory Post Synaptic Responses (IPSP)









Neuroanatomy Review?

A black square with a wavy bottom edge is centered within a white square frame. The text "Neuroanatomy Review?" is positioned above the square. The square is solid black and occupies a significant portion of the frame's area.