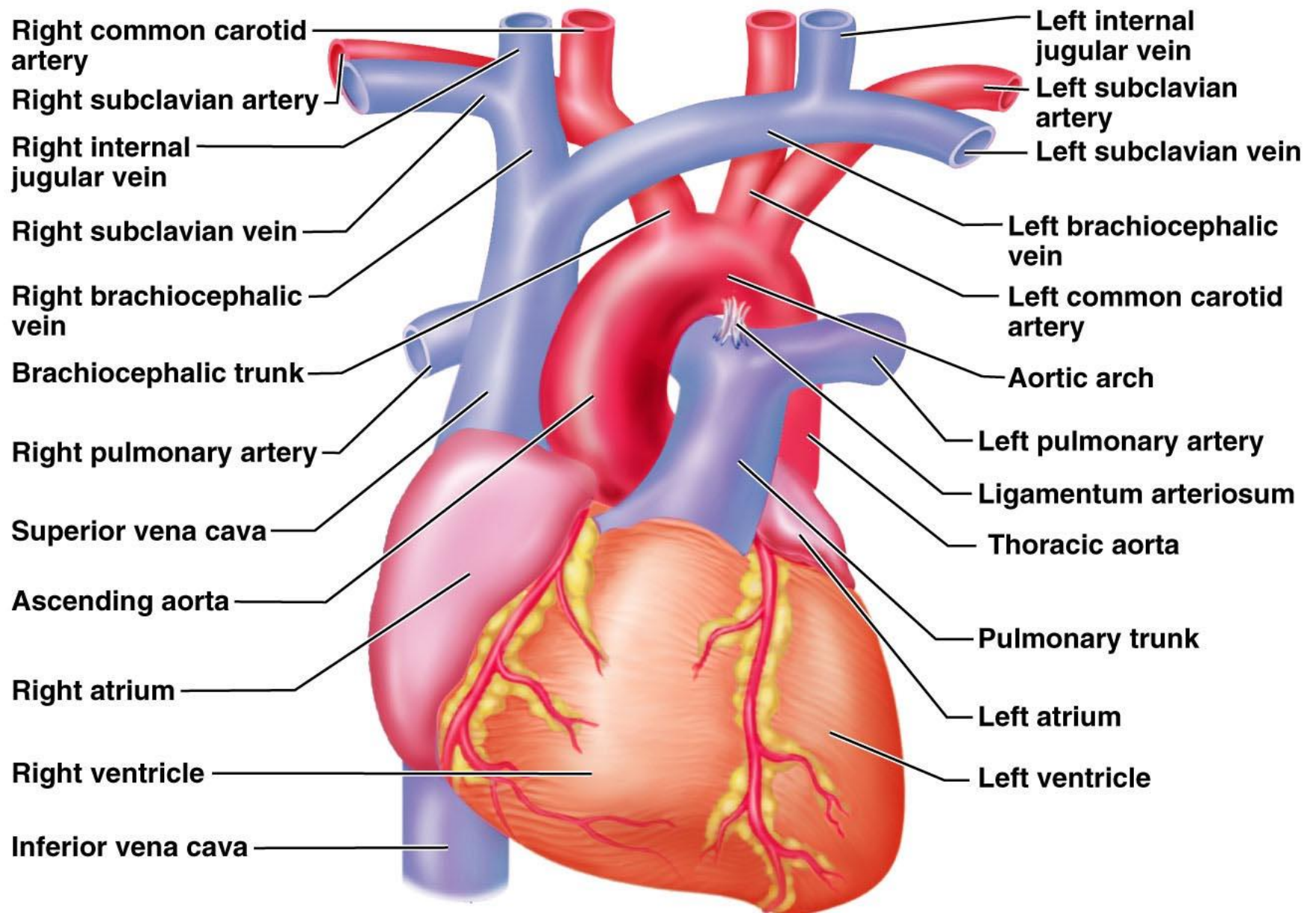
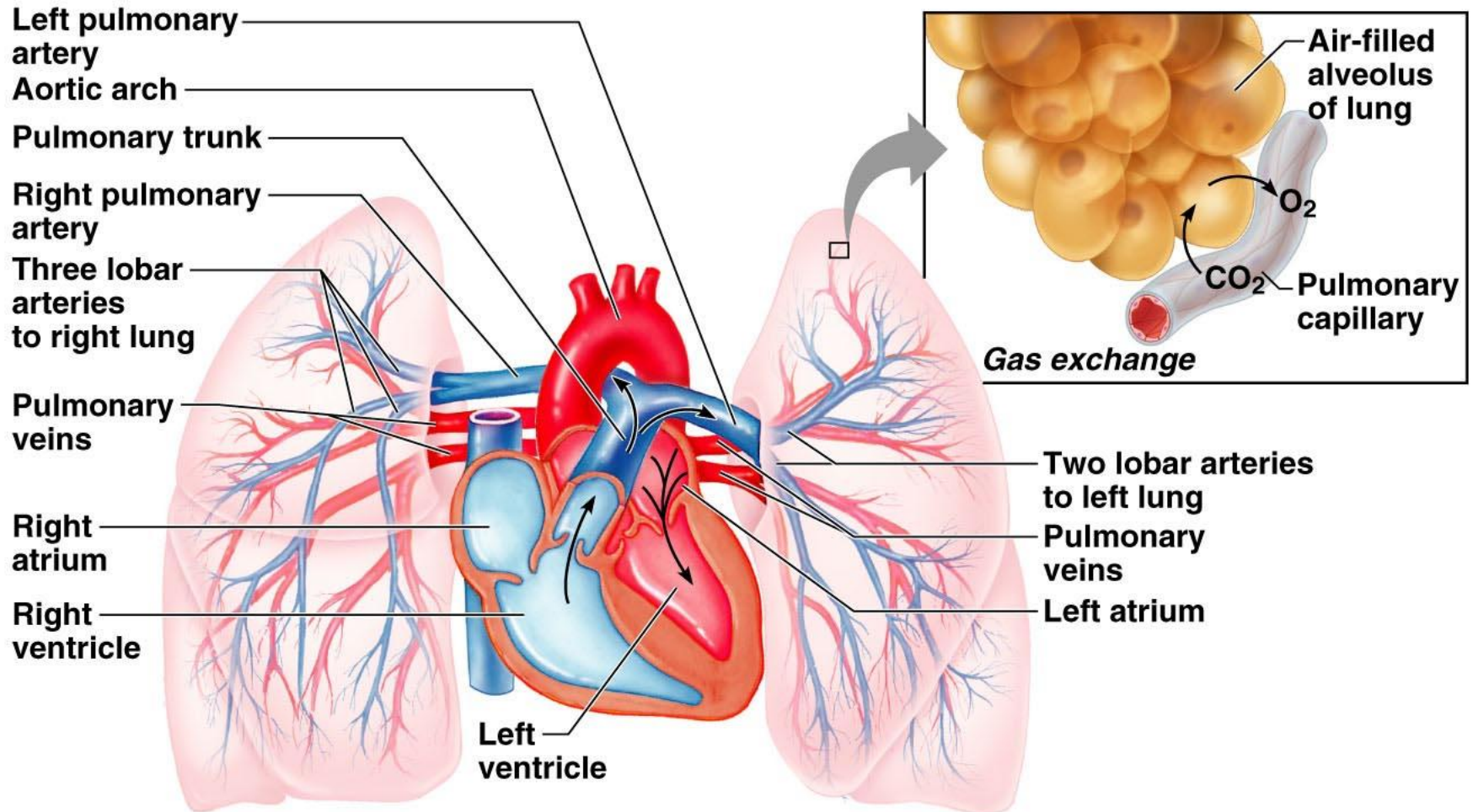


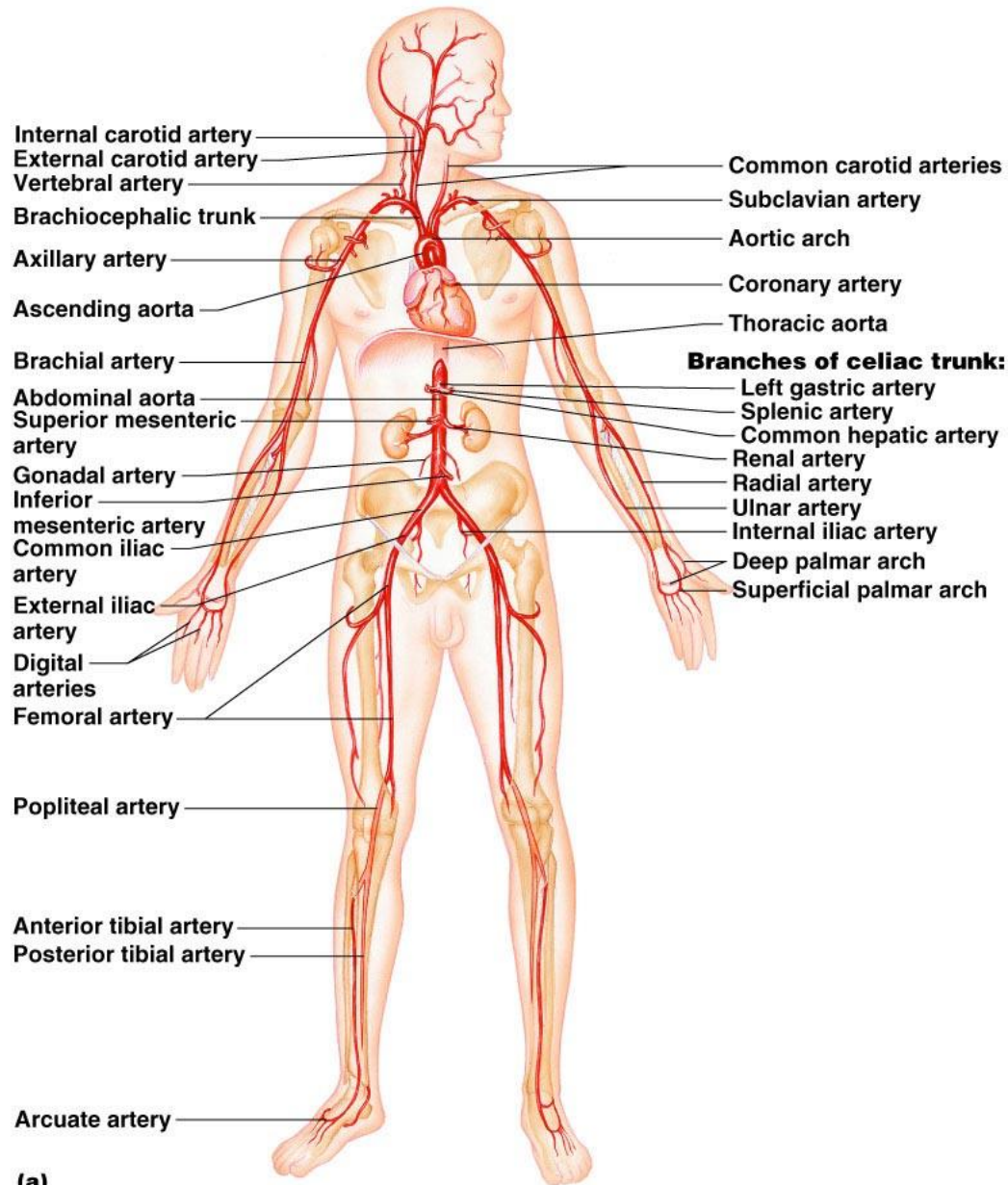
Pulmonary Circulation

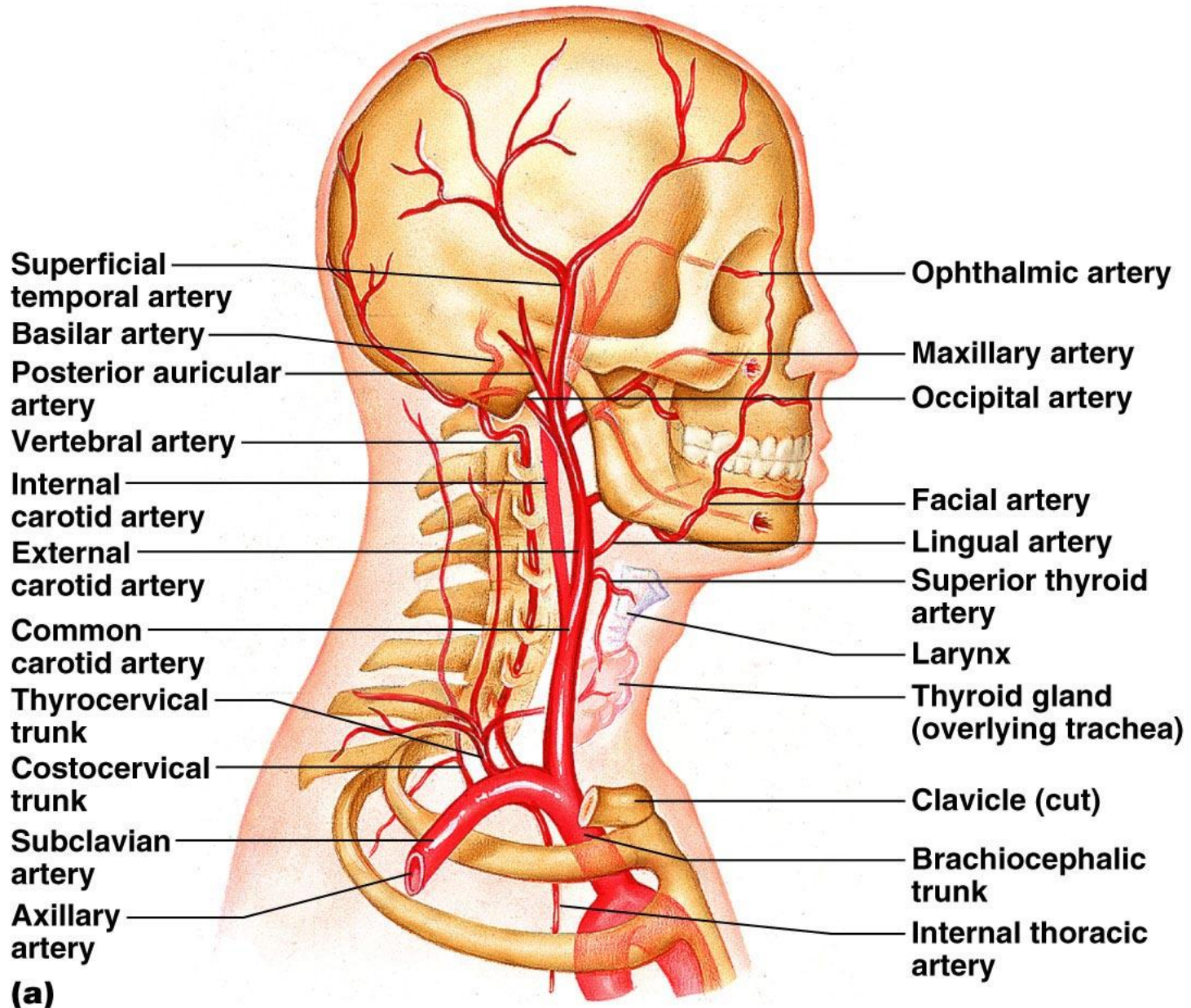


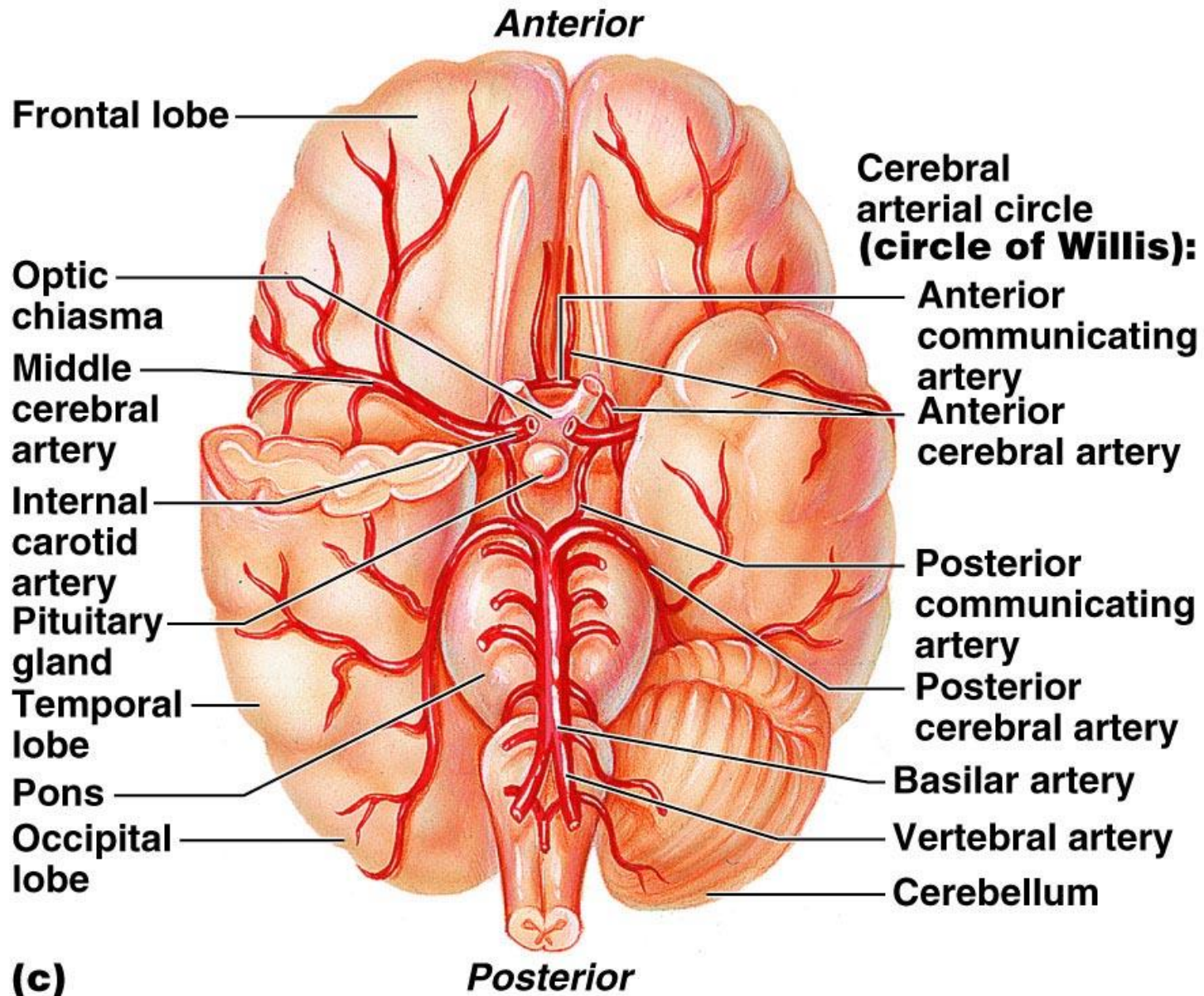
Pulmonary Circulation

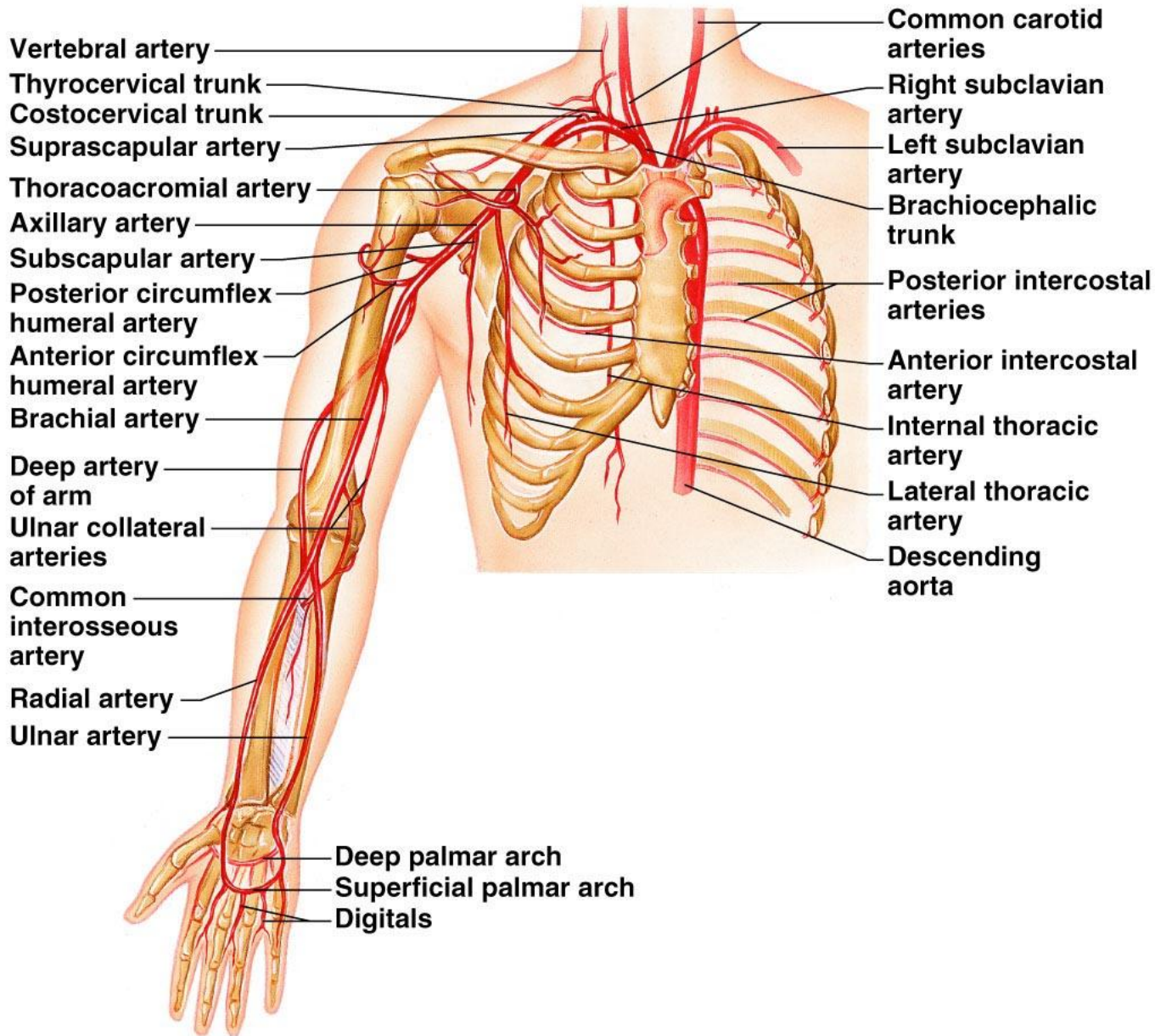


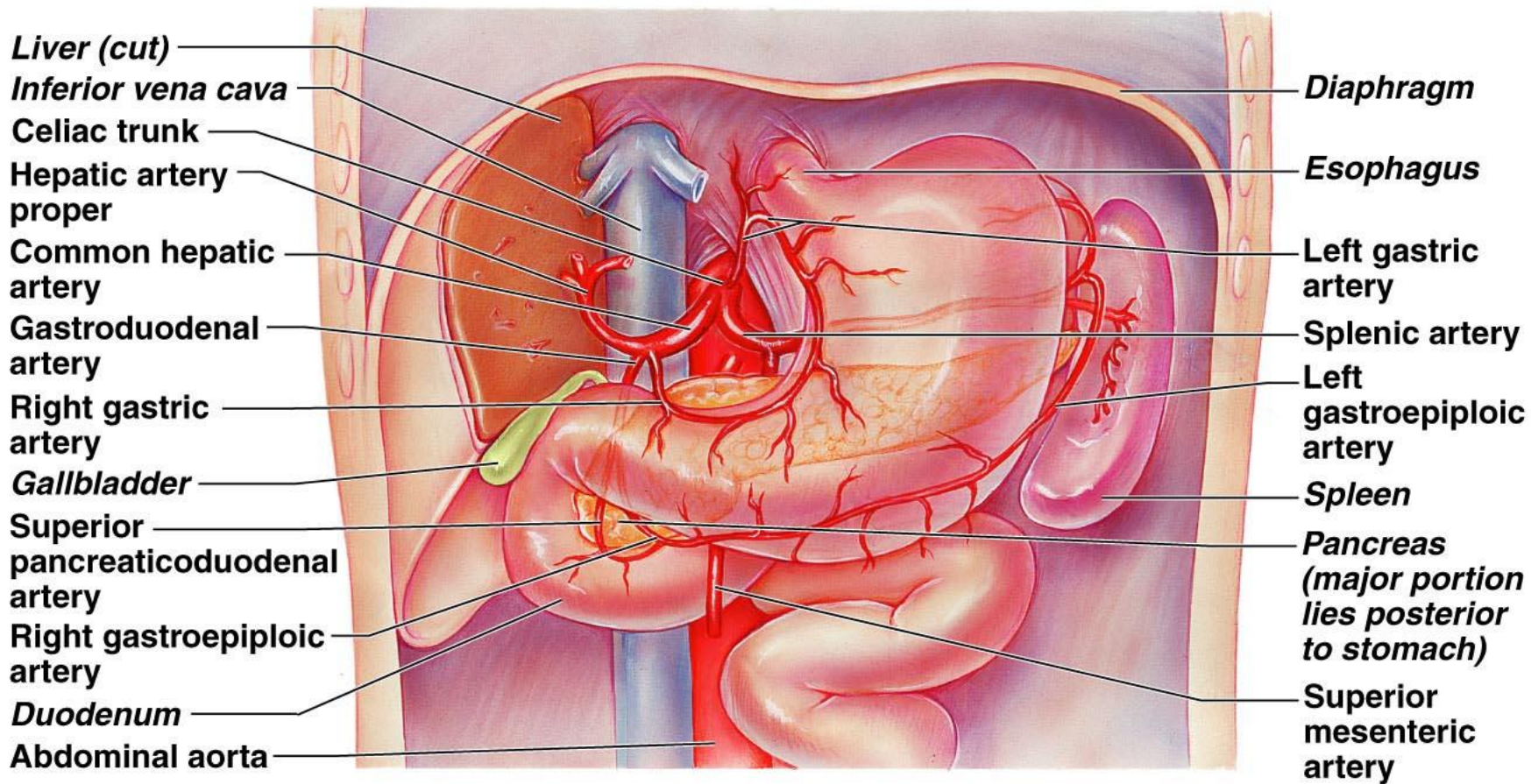
Systemic Circulation

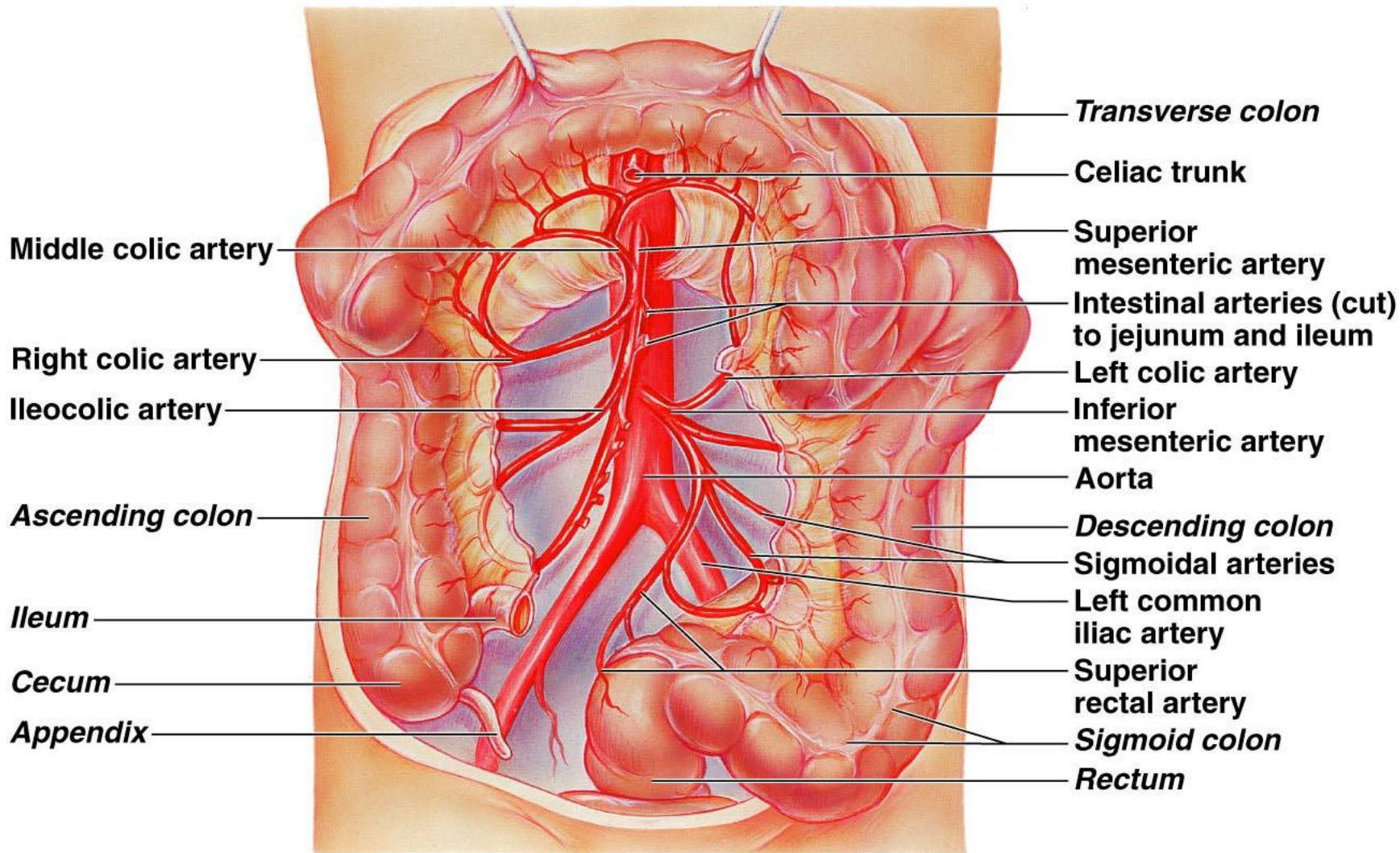












Hiatus
(opening)
for inferior
vena cava

Hiatus
(opening)
for
esophagus

Adrenal
(suprarenal)
gland

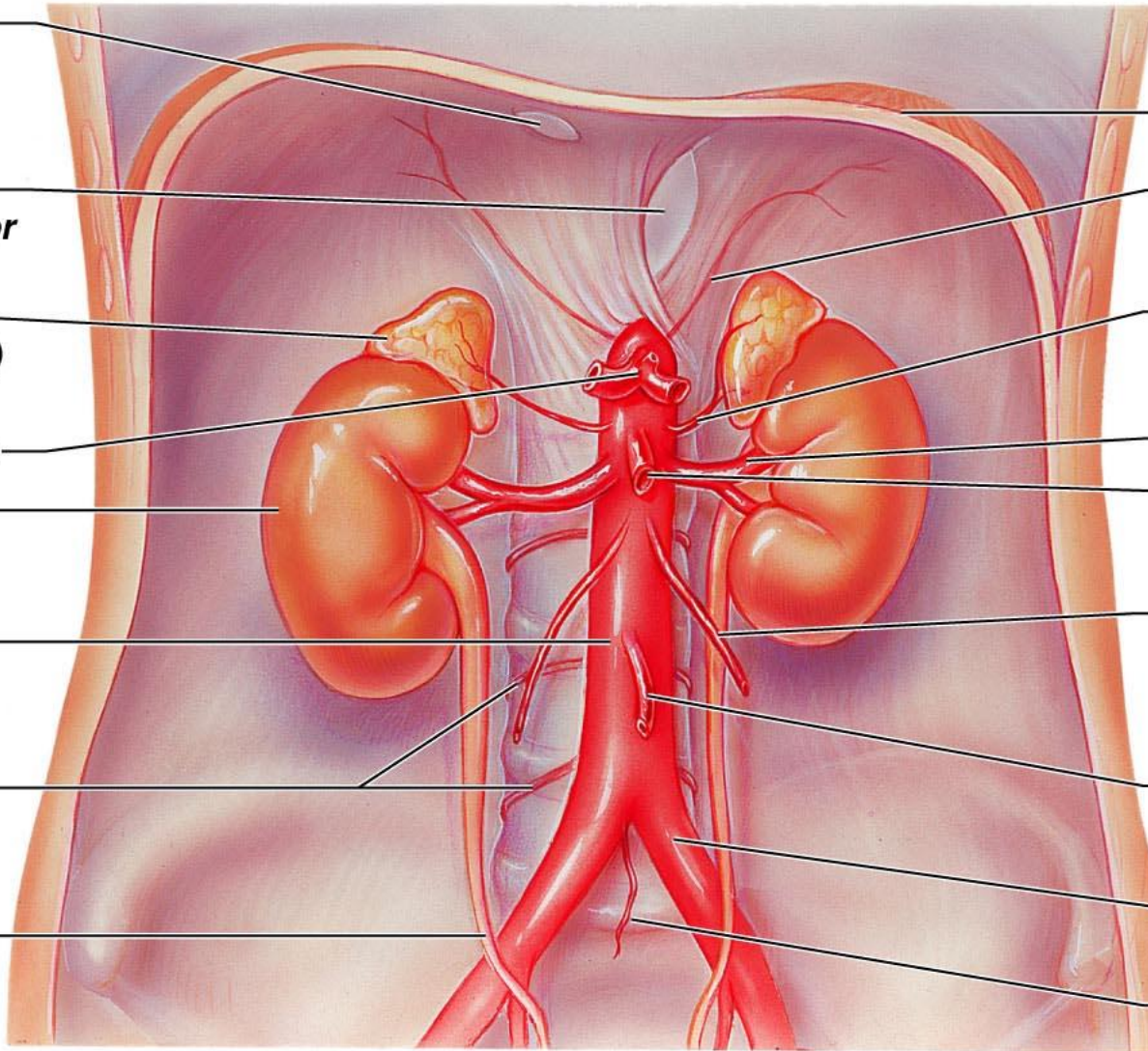
Celiac trunk

Kidney

Abdominal
aorta

Lumbar
arteries

Ureter



Diaphragm

Inferior phrenic
artery

Middle
suprarenal
artery

Renal artery

Superior
mesenteric
artery

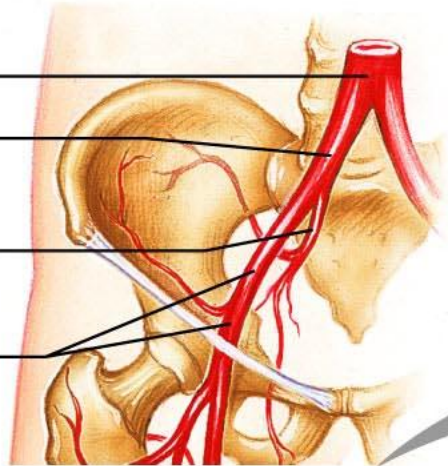
Gonadal
(testicular
or ovarian)
artery

Inferior
mesenteric
artery

Common iliac
artery

Median sacral
artery

Aorta
 Common iliac artery
 Internal iliac artery
 External iliac artery



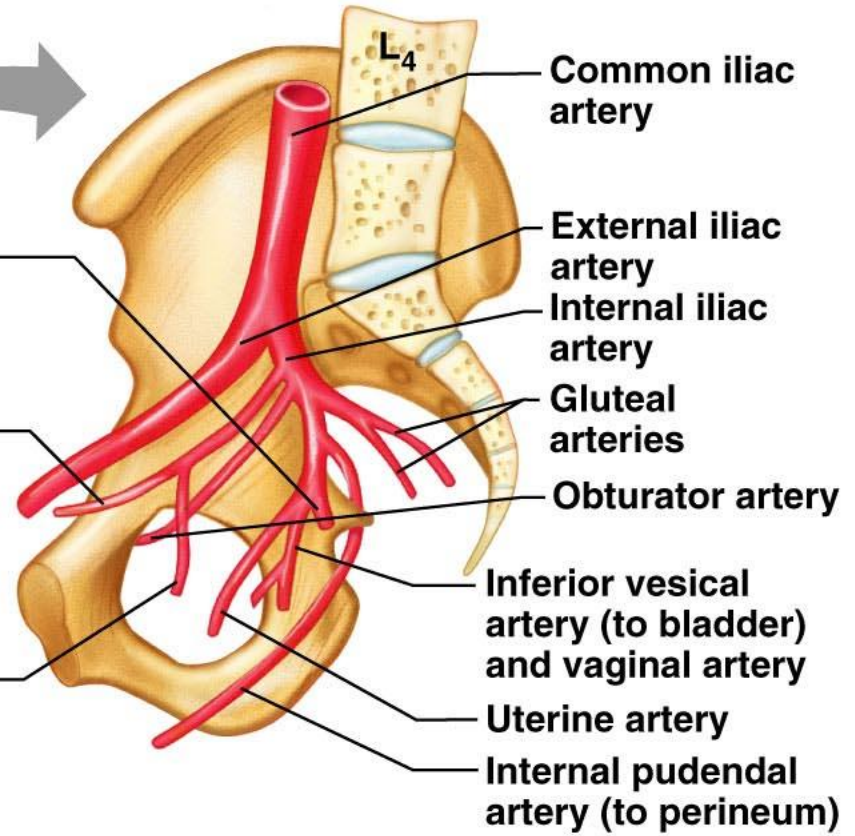
(a)

Middle rectal artery (to rectum)

Medial umbilical ligament (obliterated umbilical artery of fetus)

Superior vesical artery (to bladder)

(b)



L₄
 Common iliac artery

External iliac artery

Internal iliac artery

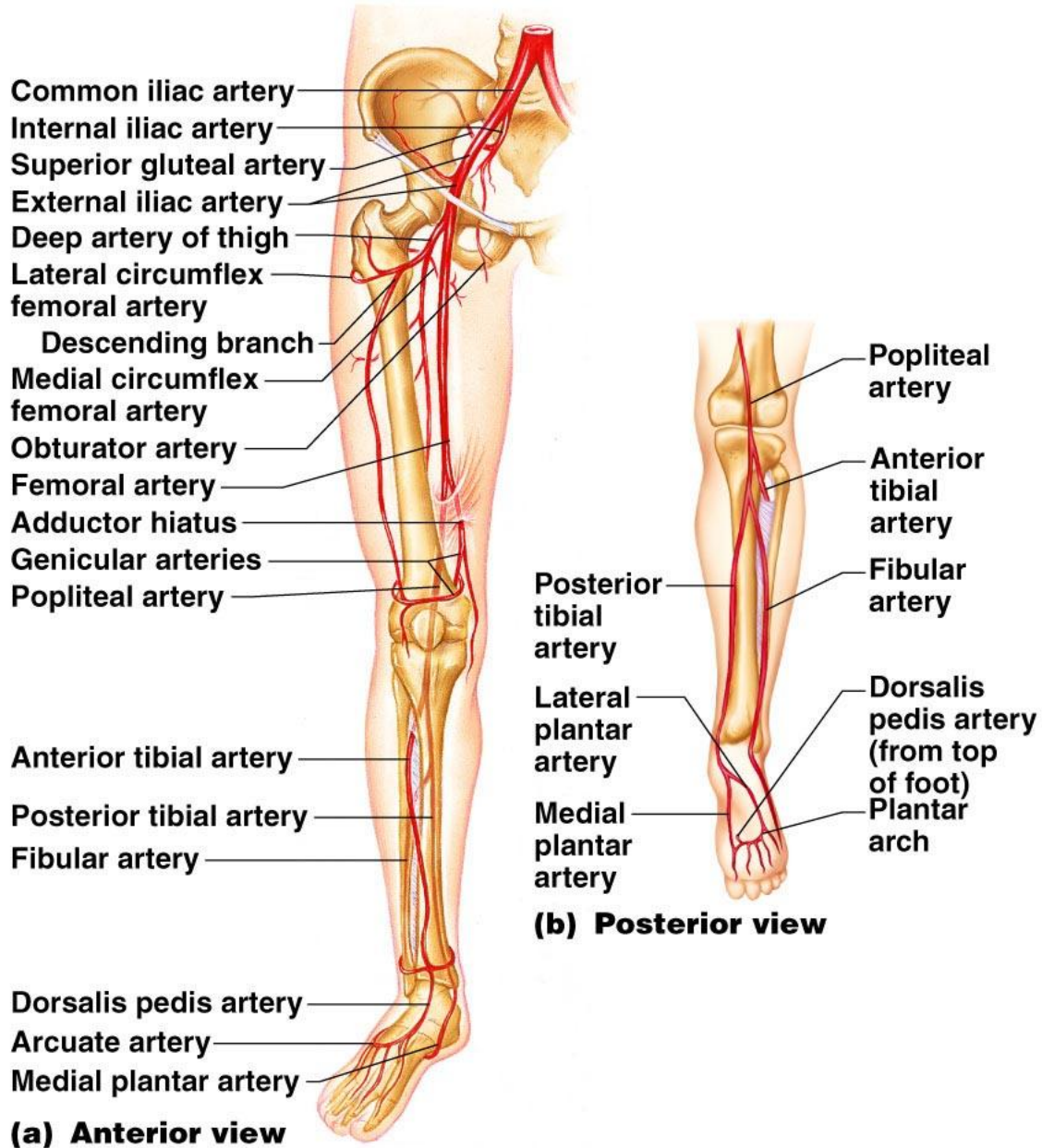
Gluteal arteries

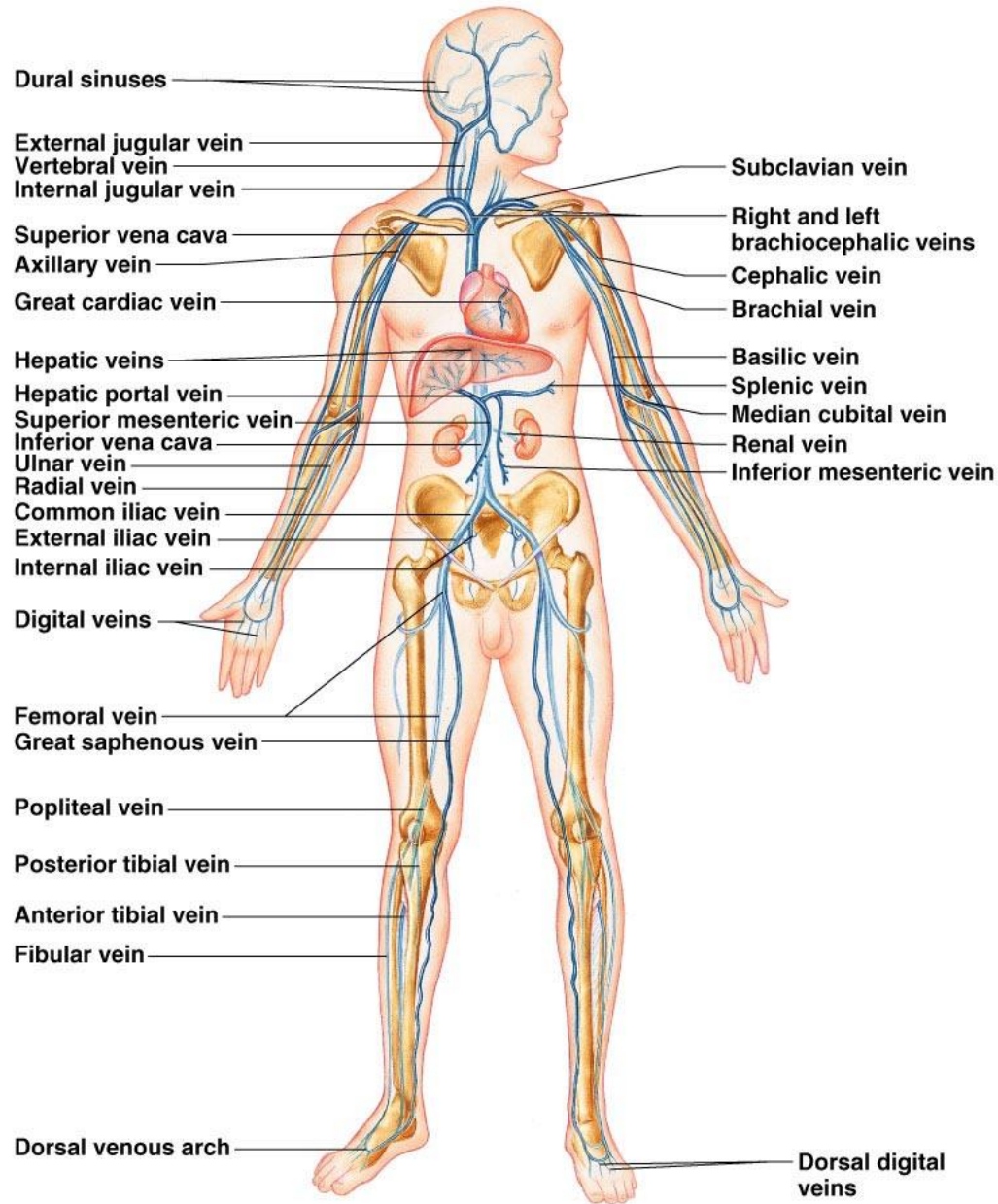
Obturator artery

Inferior vesical artery (to bladder) and vaginal artery

Uterine artery

Internal pudendal artery (to perineum)





Superior sagittal sinus

Falx cerebri

Inferior sagittal sinus

Straight sinus

Cavernous sinus

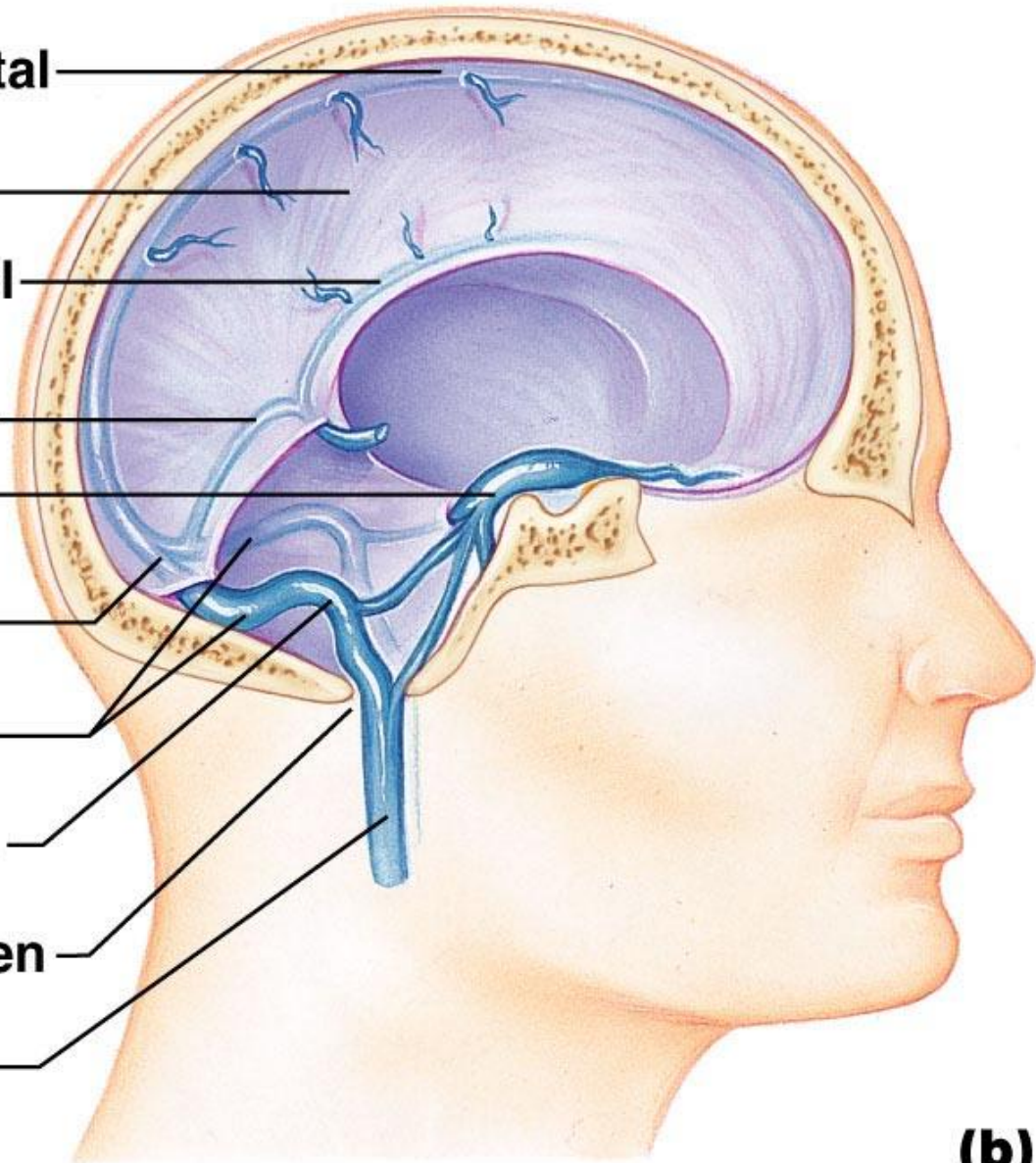
Junction of sinuses

Transverse sinuses

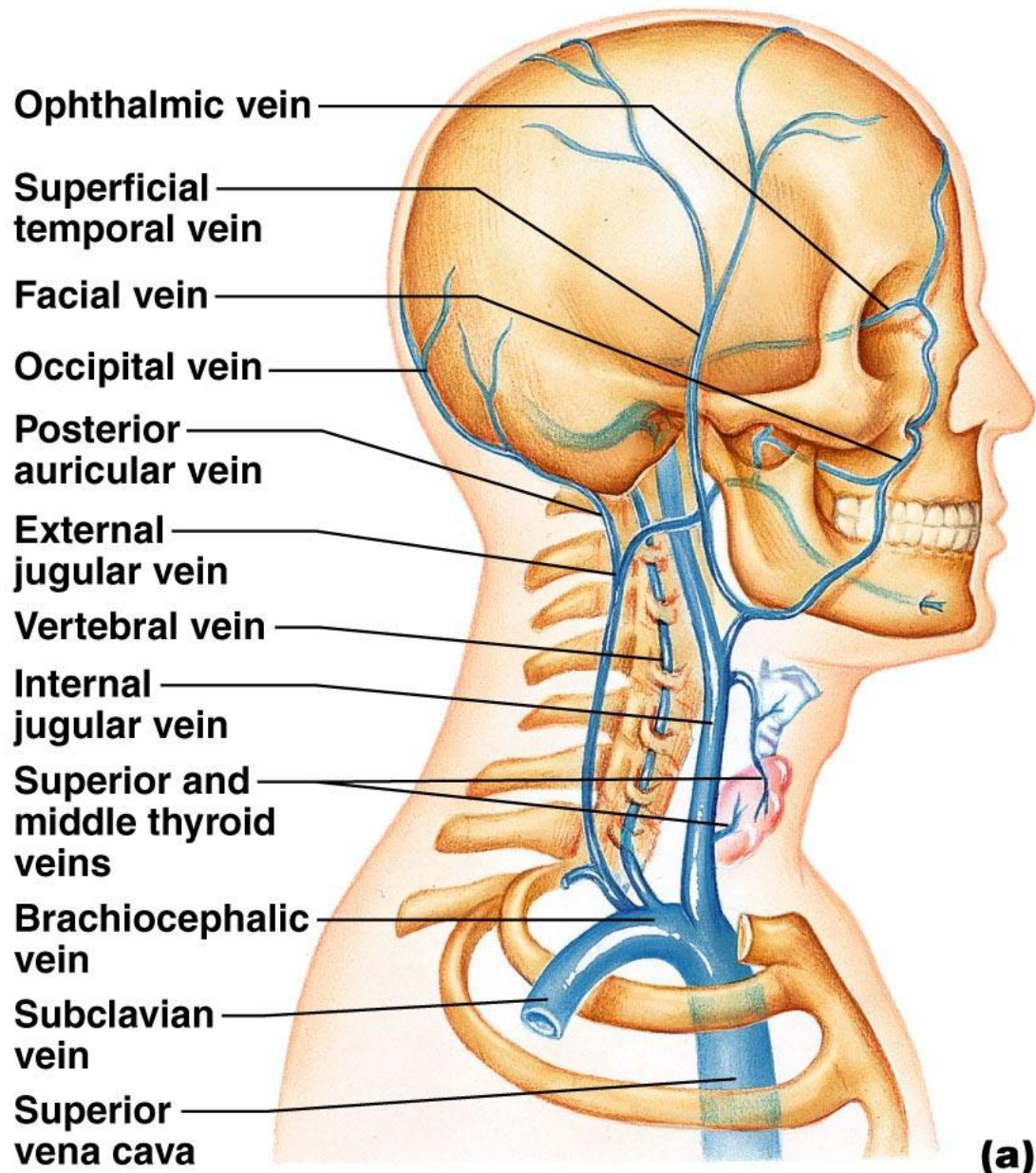
Sigmoid sinus

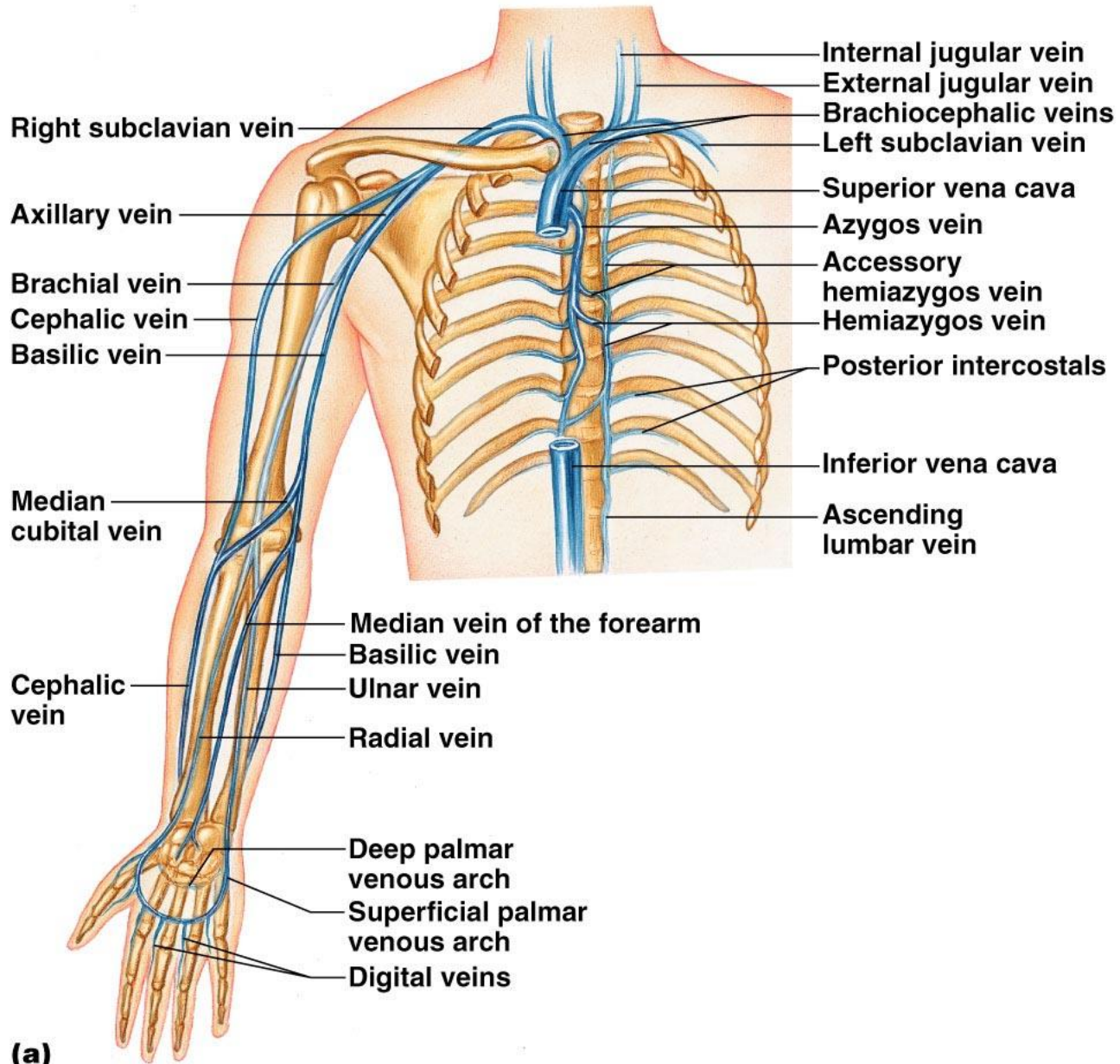
Jugular foramen

Right internal jugular vein

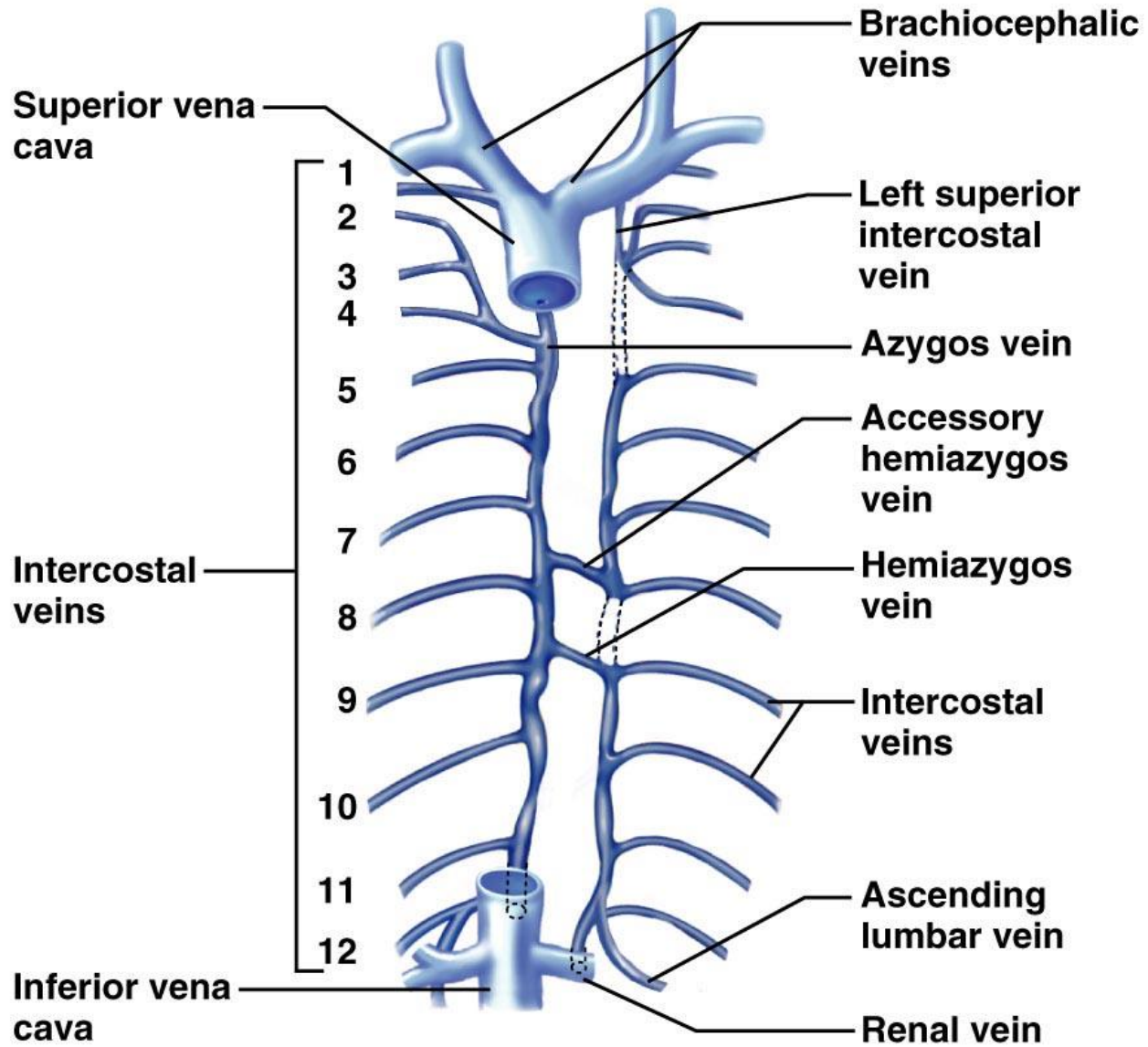


(b)





(a)



(b)

