

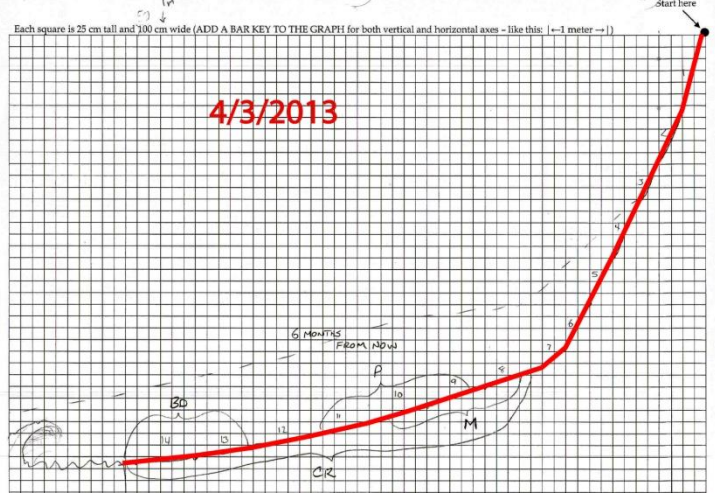
OCEANOGRAPHY 1 LAB DATA

OCEAN BEACH PROFILES

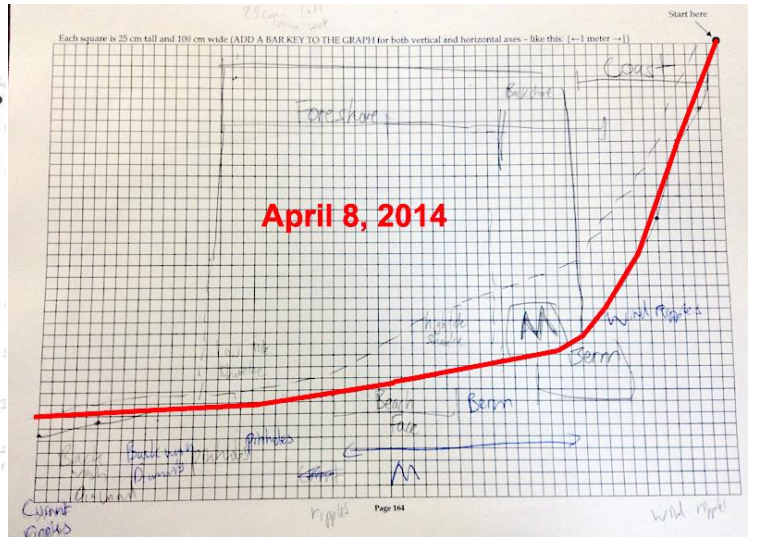
**10/11/11 3:05 pm; TIDE: 1.8 ft ebb current;
WIND: 5.5 mph from NW;
RELATIVE HUMIDITY: 94%**



**4/3/13 4:30 pm; TIDE: 0.4 ft low tide;
WIND: 7.5MPH from 285 (NW)
RELATIVE HUMIDITY: 72%; TEMP: 58F**



**10/13/12 4:30 pm; TIDE: 1.5 ft flood current;
WIND: 5 mph from 270 (mostly west);
RELATIVE HUMIDITY: 70%**



**10/2/2013 (3:00 pm; TIDE: 1.8ft ebb current)
WIND: 12.5-17.4 mph (west)
RELATIVE HUMIDITY:**

