



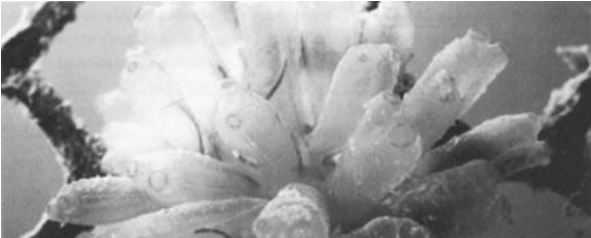
Which phylum contains **sea cucumbers**?

- a. Porifera
- b. Echinodermata
- c. Cnidarian
- d. Arthropoda
- e. Chordata



Which phylum contains **mussels**?

- a. Porifera
- b. Echinodermata
- c. Cnidarian
- d. Arthropoda
- e. Mollusca



Which phylum contains **tunicates**?

- a. Porifera
- b. Echinodermata
- c. Cnidarian
- d. Arthropoda
- e. Chordata



Which phylum contains **crabs**?

- a. Porifera
- b. Echinodermata
- c. Cnidarian
- d. Arthropoda
- e. Chordata



Which phylum contains **sea urchins**?

- a. Porifera
- b. Echinodermata
- c. Cnidarian
- d. Arthropoda
- e. Chordata



Which phylum contains **sponges**?

- a. Porifera
- b. Echinodermata
- c. Cnidarian
- d. Arthropoda
- e. Chordata



Which phylum contains **anemones**?

- a. Porifera
- b. Echinodermata
- c. Cnidarian
- d. Arthropoda
- e. Chordata



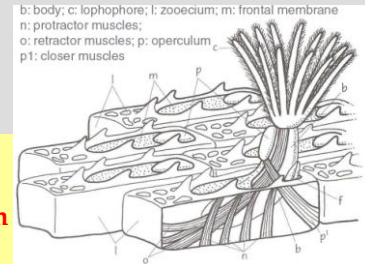
Which phylum contains **chitons**?

- a. Porifera
- b. Echinodermata
- c. Cnidarian
- d. Arthropoda
- e. Mollusca



Which phylum contains **the pile worm**?

- a. Annelida
- b. Bryozoans
- c. Mollusca
- d. Arthropoda
- e. Chordata



b: body; c: lophophore; l: zoecium; m: frontal membrane
 n: protractor muscles;
 o: retractor muscles; p: operculum
 p1: closer muscles

Which phylum contains **the organisms shown here**?

- a. Annelida
- b. Bryozoans
- c. Mollusca
- d. Arthropoda
- e. Chordata



Which phylum contains **sea slugs and nudibranchs**?

- a. Annelida
- b. Bryozoans
- c. Mollusca
- d. Arthropoda
- e. Chordata

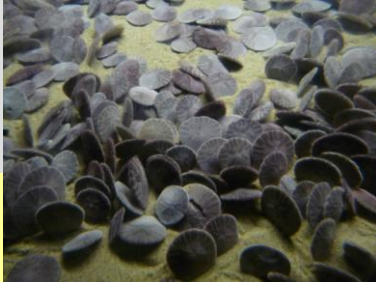


Which phylum contains **jellyfish**?

- a. Echinodermata
- b. Cnidarian
- c. Annelida
- d. Bryozoans
- e. Mollusca

Which phylum contains **sand dollars**?

- a. Porifera
- b. Echinodermata
- c. Cnidarian
- d. Arthropoda
- e. Chordata



Which phylum contains **octopus**?

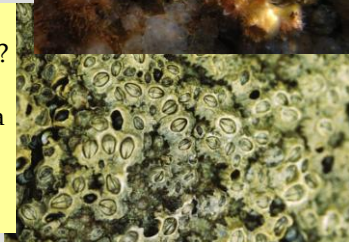
- a. Annelida
- b. Bryozoans
- c. Mollusca
- d. Arthropoda
- e. Chordata



Photo Kirk Hargreaves

Which phylum contains **barnacles**?

- a. Porifera
- b. Echinodermata
- c. Cnidarian
- d. Arthropoda
- e. Chordata



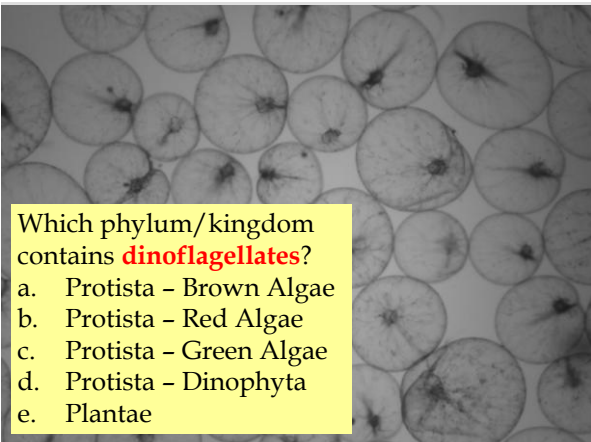
Which phylum contains **sea stars**?

- a. Porifera
- b. Echinodermata
- c. Cnidarian
- d. Arthropoda
- e. Chordata



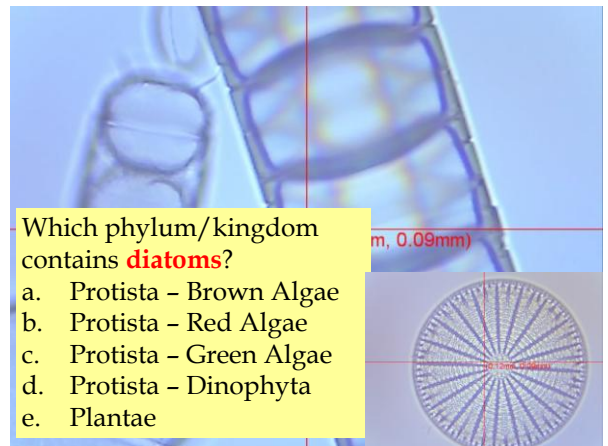
Which phylum/kingdom contains **dinoflagellates**?

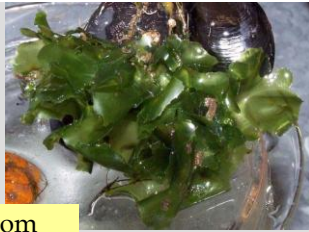
- a. Protista - Brown Algae
- b. Protista - Red Algae
- c. Protista - Green Algae
- d. Protista - Dinophyta
- e. Plantae



Which phylum/kingdom contains **diatoms**?

- a. Protista - Brown Algae
- b. Protista - Red Algae
- c. Protista - Green Algae
- d. Protista - Dinophyta
- e. Plantae





Which phylum/kingdom contains **sea lettuce**?

- a. Protista - Brown Algae
- b. Protista - Red Algae
- c. Protista - Green Algae
- d. Protista - Dinophyta
- e. Plantae



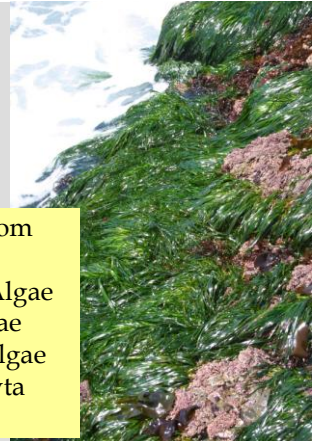
Which phylum/kingdom contains **rockweed**?

- a. Protista - Brown Algae
- b. Protista - Red Algae
- c. Protista - Green Algae
- d. Protista - Dinophyta
- e. Plantae



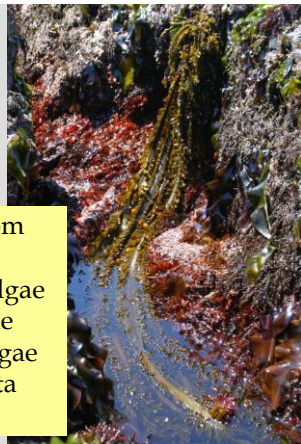
Which phylum/kingdom contains **sea sacs**?

- a. Protista - Brown Algae
- b. Protista - Red Algae
- c. Protista - Green Algae
- d. Protista - Dinophyta
- e. Plantae



Which phylum/kingdom contains **surf grass**?

- a. Protista - Brown Algae
- b. Protista - Red Algae
- c. Protista - Green Algae
- d. Protista - Dinophyta
- e. Plantae



Which phylum/kingdom contains **kelp**?

- a. Protista - Brown Algae
- b. Protista - Red Algae
- c. Protista - Green Algae
- d. Protista - Dinophyta
- e. Plantae



Which phylum/kingdom contains **iridescent algae**?

- a. Protista - Brown Algae
- b. Protista - Red Algae
- c. Protista - Green Algae
- d. Protista - Dinophyta
- e. Plantae



Which phylum/kingdom contains **ocean pin cushion (moss)**?

- a. Protista - Brown Algae
- b. Protista - Red Algae
- c. Protista - Green Algae
- d. Protista - Dinophyta
- e. Plantae



Which MOLLUSC subcategory contains **mussels**?

- a. Polyplacophora
- b. Gastropod
- c. Bivalve
- d. Cephalopod
- e. None of the above



Which MOLLUSC subcategory contains **abalone**?

- a. Polyplacophora
- b. Gastropod
- c. Bivalve
- d. Cephalopod
- e. None of the above





Which MOLLUSC subcategory contains **the octopus**?

- a. Polyplacophora
- b. Gastropod
- c. Bivalve
- d. Cephalopod
- e. None of the above

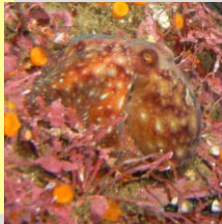


Photo: Kirk Hargrave



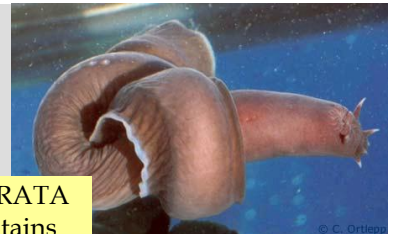
Which MOLLUSC subcategory contains **sea slugs and nudibranchs**?

- a. Polyplacophora
- b. Gastropod
- c. Bivalve
- d. Cephalopod
- e. None of the above



Which MOLLUSC subcategory contains **chitons**?

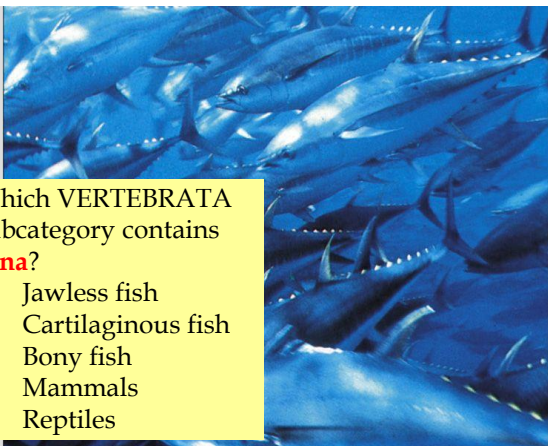
- a. Polyplacophora
- b. Gastropod
- c. Bivalve
- d. Cephalopod
- e. None of the above



© C. Ortiaga

Which VERTEBRATA subcategory contains **hagfish**?

- a. Jawless fish
- b. Cartilaginous fish
- c. Bony fish
- d. Mammals
- e. Reptiles



Which VERTEBRATA subcategory contains **tuna**?

- a. Jawless fish
- b. Cartilaginous fish
- c. Bony fish
- d. Mammals
- e. Reptiles



Which VERTEBRATA subcategory contains **sea snakes**?

- a. Jawless fish
- b. Cartilaginous fish
- c. Bony fish
- d. Mammals
- e. Reptiles



Which VERTEBRATA subcategory contains **manatee**?

- a. Jawless fish
- b. Cartilaginous fish
- c. Bony fish
- d. Mammals
- e. Reptiles



Which VERTEBRATA subcategory contains **eels**?

- a. Jawless fish
- b. Cartilaginous fish
- c. Bony fish
- d. Mammals
- e. Reptiles



Which VERTEBRATA subcategory contains **sharks**?

- a. Jawless fish
- b. Cartilaginous fish
- c. Bony fish
- d. Mammals
- e. Reptiles



Which MAMMAL subcategory contains **humpback whales**?

- a. Sirenia
- b. Cetacea - Toothed whale
- c. Cetacea - Baleen whale
- d. Carnivora - Pinniped
- e. Carnivora - Fissiped



Which MAMMAL subcategory contains **seals**?

- a. Sirenia
- b. Cetacea - Toothed whale
- c. Cetacea - Baleen whale
- d. Carnivora - Pinniped
- e. Carnivora - Fissiped



Which MAMMAL subcategory contains **orca whales**?

- a. Sirenia
- b. Cetacea - Toothed whale
- c. Cetacea - Baleen whale
- d. Carnivora - Pinniped
- e. Carnivora - Fissiped



Which MAMMAL subcategory contains **sea lions**?

- a. Sirenia
- b. Cetacea - Toothed whale
- c. Cetacea - Baleen whale
- d. Carnivora - Pinniped
- e. Carnivora - Fissiped



Which MAMMAL subcategory contains **sperm whales**?

- a. Sirenia
- b. Cetacea - Toothed whale
- c. Cetacea - Baleen whale
- d. Carnivora - Pinniped
- e. Carnivora - Fissiped



Which MAMMAL subcategory contains **polar bear**?

- a. Sirenia
- b. Cetacea - Toothed whale
- c. Cetacea - Baleen whale
- d. Carnivora - Pinniped
- e. Carnivora - Fissiped



Which MAMMAL subcategory contains **California Gray Whales**?

- a. Sirenia
- b. Cetacea - Toothed whale
- c. Cetacea - Baleen whale
- d. Carnivora - Pinniped
- e. Carnivora - Fissiped



Which MAMMAL subcategory contains **dolphins**?

- a. Sirenia
- b. Cetacea - Toothed whale
- c. Cetacea - Baleen whale
- d. Carnivora - Pinniped
- e. Carnivora - Fissiped



Which MAMMAL subcategory contains **manatee**?

- a. Sirenia
- b. Cetacea - Toothed whale
- c. Cetacea - Baleen whale
- d. Carnivora - Pinniped
- e. Carnivora - Fissiped



Which MAMMAL subcategory contains **sea otters**?

- a. Sirenia
- b. Cetacea - Toothed whale
- c. Cetacea - Baleen whale
- d. Carnivora - Pinniped
- e. Carnivora - Fissiped



Which MAMMAL subcategory contains **walrus**?

- a. Sirenia
- b. Cetacea - Toothed whale
- c. Cetacea - Baleen whale
- d. Carnivora - Pinniped
- e. Carnivora - Fissiped

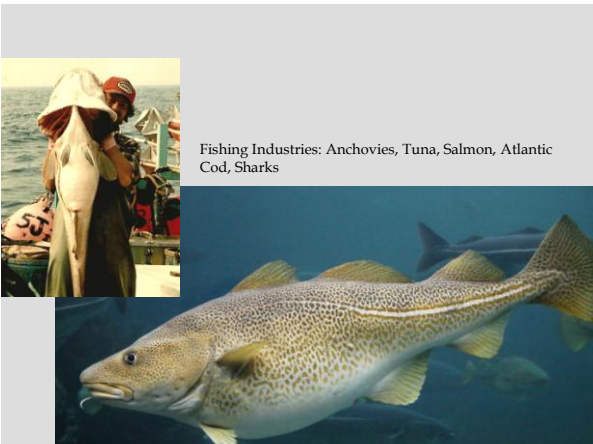
Fishing Industries: Anchovies, Tuna, Salmon, Atlantic Cod, Sharks



Fishing Industries: Anchovies, Tuna, Salmon, Atlantic Cod, Sharks



Fishing Industries: Anchovies, Tuna, Salmon, Atlantic Cod, Sharks



Fishing Industries: Anchovies, Tuna, Salmon, Atlantic Cod, Sharks



