

Desafinado

Music by Antonio Carlos Jobim

Lyrics by Jon Hendricks

& Jessie Cavanaugh

Med. Bossa Nova

A F_{MA}^7 $G7(b5)$

Love is like a nev - er end - ing mel - o - dy,
Once your kiss - es raised me to a fe - ver pitch,

G_{MI}^7 C^7 $A_{MI}^7(b5)$ $D7(b9)$

Po - ets have com - pared it to a sym - pho - ny,
Now the or - ches - tra - tion does - n't seem so rich,

^{1.} G_{MI}^7 $A7(b9)$ D^7 $D7(b9)$

A sym - pho - ny con - duc - ted by the light - ing of the moon,

$G7(b9)$ $G^b_{MA}^7$ $(C7(b9))$

But our song of love is slight - ly out of tune.

^{2.} G_{MI}^7 $B^b_{MI}^6$ F_{MA}^7 $E7(\#9)$

Seems to me you've changed the tune we used to sing,

A_{MA}^7 B^b_{o7} B_{MI}^7 E^7

Like the bos - sa no - va love should swing. We used

B A_{MA}^7 B^b_{o7} B_{MI}^7 E^7

to har - mo - nize two souls in per - fect time,



Now the song is dif - frent and the words don't e - ven rhyme; 'Cause you



for - got the mel - o - dy our hearts would al - ways croon, And so what



good's a heart that's slight - ly out of tune?



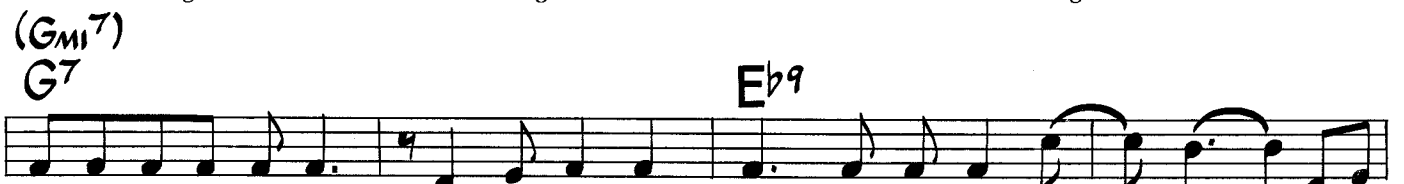
Tune your heart to mine the way it used to be,



Join with me in har - mo - ny and sing a song of lov - ing, We're



bound to get in tune a - gain be - fore too long, There'll be



no de - sa - fi - na - do when your heart be - longs to me com - plete - ly, Then you



won't be slight-ly out of tune, You'll sing a - long with me.